



SPRIselect for DNA Size Selection Method Overview

The protocol describes DNA size selection. Using the Beckman Coulter SPRIselect size selection method, the size distribution can be adjusted using left, right and double size selection to meet the specifications defined per application. Left size selection uses a high-volume ratio of SPRIselect sample to remove smaller genomic material on the left side of the size distribution, keeping the larger fragments. The right size selection removes genomic material on the right side of the size distribution to keep smaller fragments. Double size selection on the other hand, removes genomic material on the left and on the right to keep “size selected” material in the interval yielding a tight fragment size distribution.

SPRIselect Process Workflow

Single Size Selection Workflow



Double-sided Size Selection Workflow



Total Estimated Time

		Left Side Size Selection	Right Side Size Selection	Double Side Size Selection
96 Samples	Hands-on Time	15 min	15 min	15 min
	Total Time	50 min	1 hr 5 mins	1 hr 12 mins

Input Material, Reagents, Consumables

Input Material

Description	Storage Temperature
DNA from enzymatic reaction	4°C— -80°C

Reagents

Description	Supplier	Storage Temperature
SPRIselect	Beckman Coulter	Room Temp
100% Ethanol (Molecular Grade)	User	Room Temp
Nuclease-free water (Molecular Grade)	User	Room Temp

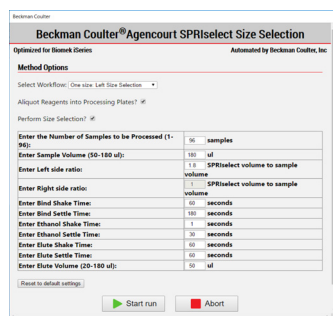
Consumable Plastics

Description	Supplier	Quantity Needed for 96 Samples
Beckman i-Series 1025uL Tips, Pre-sterile with Barrier	Beckman	5
Hard-Shell® Thin-Wall 96-Well Skirted PCR Plates, clear wells	BioRad	2
Quarter Reservoir	Beckman	2
Reservoir, Half	Beckman	1
Abgene™, Storage Plate, 96-well, 0.8 mL, individually wrapped	ThermoFisher	2

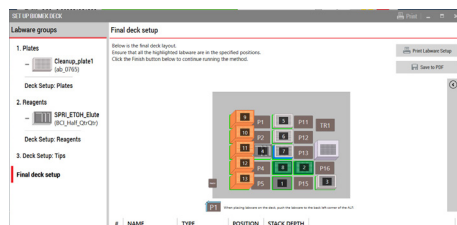
Method Overview



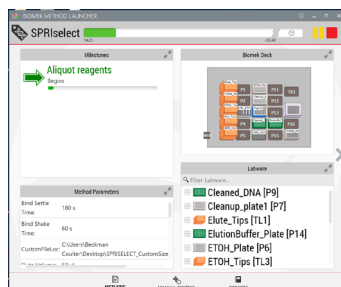
Biomek Method Launcher (BML) organizes methods into useful groups



Method Options Selector (MOS) enables flexibility specific to your sample process batch size, process options and workflow customization



Guided Labware Setup (GLS) provides clear instructions to setup the instrument deck with calculated reagent volume and step-by-step instructions to prepare reagents based on options selected



Run Status Screen (RSS) shows progress of run, current activity and time to completion

For Research Use Only. Not intended or validated for use in the diagnosis of disease or other conditions.

©2020 Beckman Coulter, Inc. All rights reserved. Beckman Coulter, the stylized logo, and the Beckman Coulter product and service marks mentioned herein are trademarks or registered trademarks of Beckman Coulter, Inc. in the United States and other countries. All other trademarks are property of their respective owners. Beckman Coulter makes no warranties of any kind whatsoever express or implied, with respect to this protocol, including but not limited to warranties of fitness for a particular purpose or merchantability or that the protocol is non-infringing. All warranties are expressly disclaimed. Your use of the method is solely at your own risk, without recourse to Beckman Coulter. This protocol is for demonstration only, and is not validated by Beckman Coulter.



For Beckman Coulter's worldwide office locations and phone numbers, please visit Contact Us at [beckman.com](https://www.beckman.com)

AAG-7820FLY08.20